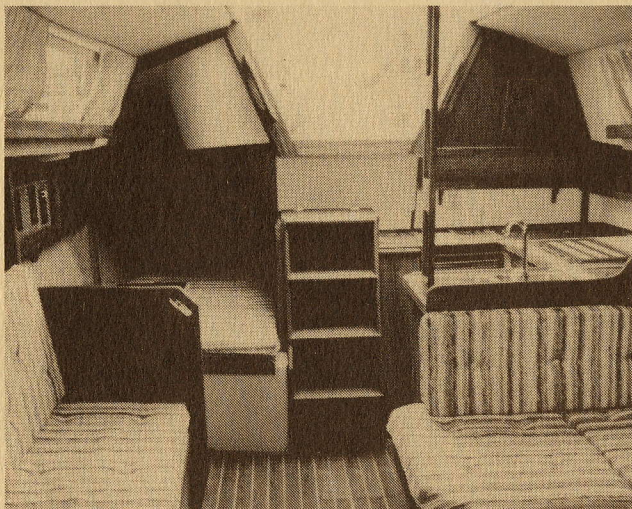


TICON 30





T-30: A SOUND INVESTMENT

Set sail with confidence or drop anchor and settle back in comfort. The T-30 is a yacht of uncompromised quality.

Thoughtful attention to detail, proven solid construction techniques, highest quality hardware and fittings, graceful lines, and sailing performance, the T-30 is destined to be a modern day classic.

More interior space and deluxe features than normally expected in a 30-foot yacht. The T-30 accommodations plan is dedicated to maximum utilization of space for comfort, convenience and utility. Quality materials, plenty of ventilation, thick foam cushions, and generous teak trim, T-30 creates a livability below to be envied by much larger boats.

This Halsey Herreshoff design performs well on all points of sail. With 4,250 lbs. of lead ballast, she is stiff, steady, and forgiving in heavy air and is an excellent light air "Ghooster."

The T-30 is a financial and aesthetic investment you will enjoy for years to come.

Dimensions, Weights, Capacities

* L.O.A.	29' 11"
* D.W.L.	26' 0"
* Beam (MAX)	11' 0"
* Draft - Standard	5' 5"
- Shoal	4' 1"
* Displacement - Standard Draft	9,600 lbs.
- Shoal Draft	4,500 lbs.
* Ballast - Standard Draft	4,250 lbs.
- Shoal Draft	4,550 lbs.
* Sail Area	434 sq. ft.
* Fresh Water	30 U.S. Gal.
* Waste Holding	30 U.S. Gal.
* Fuel	20 U.S. Gal.
* Headroom	6' 3"
* Berths	6/7

Colours

Hull:

- * Ticon beige with molded-in dark brown boot stripe.
Or;
Ticon white with molded-in dark blue boot stripe.
- * Mylar gold accent cove stripe.

Deck:

- * Ticon white with molded in beige non-skid on all working surfaces.

Construction

Hull:

- * Hand layup molded FRP with alternating layers of fiberglass mat, unidirectional and woven rovings. Isophthalic resin and gelcoat.
- * Gelcoat below waterline sealed with 2 coats of high-build epoxy.

Deck:

- * Hand layup molded FRP cored with Klegecell in all horizontal areas.
- * Reinforced in all high stress areas with marine ply and/or additional layers of FRP.

Hardware & Fittings:

- * Exterior hardware and fittings of electro-polished stainless steel (S.S.) or marine grade anodized aluminum alloy.
- * Hardware and fittings bedded with polyurethane sealant and thru-bolted to packing plates with S.S. fasteners.

Hull/Deck Joint:

- * Deck bedded to hull with bottle tape sealant and thru-bolted with S.S. fasteners through toerail to inside of hull flange.
Hull.
- * Anodized aluminum rubrails with heavy vinyl inserts bedded and fastened over joint on sides and transom.

Interior:

- * Structural components bonded to hull and/or deck with overlapping layers of FRP.
- * FRP molded spider frame bedded and bonded to hull. Large limber holes for proper drainage to bilge.
- * Resin saturated 1/2" marine ply sole fastened to floors with S.S. screws, bonded at seams and to hull at perimeter. 1/2" top sole bonded and fastened over.
- * Structural bulkheads of 3/4" marine ply, located over floors, bonded to hull and deck with Klegecell fillet.

Keel:

- * External, performance designed fin keel of cast lead alloy with added antimony. Bedded to hull with 2 part polysulphide and thru-bolted to a heavily reinforced sump with S.S. bolts.

Rudder:

- * Semi-balanced FRP spade rudder with S.S. stiffening plate welded to heavy S.S. stock.
- * Mounted to heavily reinforced and supported FRP rudder tube.

Exterior

- * Anchor roller welded to stemhead fitting.
- * Large, self-draining anchor and rode locker with FRP hatch in foredeck.
- * Black anodized aluminum toe rail system.
- * Mooring chocks at bow.
- * Large, black anodized, aluminum mooring cleats (6).
- * Deckplates for water, waste and fuel tanks with winch handle sockets in caps.
- * Teak handrails on coachroof.
- * S.S. double rail pulpit.
- * S.S. double rail pushpit with integral fold-down swim ladder forming latching gate.
- * 24" S.S. lifeline stanchions with standard toe rail system bases.
- * Double vinyl covered S.S. lifelines with open-body turnbuckles forward and pelican hooks aft.
- * Black anodized, cast aluminum frame hatches with lexan glazing (2).

- * Black anodized, cast aluminum opening port lights with lexan glazing and removable screens (8).
- * Wide companionway opening with lexan drop boards and sliding FRP hatch over.
- * FRP sprayhood over companionway hatch.
- * "T" shaped cockpit with molded, self-draining seats, bridgedeck and high molded coamings.
- * Large drains in cockpit sole (2).
- * Cockpit locker with slatted wood floor. FRP lids with S.S. spring support.
- * Vented and drained LPG tank lockers under helmsman's seat with FRP lids.
- * All brightwork finished and oiled.

Interior

General:

- * Solid teak or teak veneer, as appropriate, with teak trim throughout.
- * Beige gelcoat on all molded FRP components.
- * "Soft-touch" marine grade fabric as well as handcrafted fine wood slatting on visible areas of the hull above molded liner.
- * Textured headliner with teak battens in main cabin, removable for access to deck hardware fasteners.
- * Teak searails, with cleanouts at corners, on all working surfaces.
- * Teak faced birch drawers.
- * Teak framed doors with woven cane panels on stowage lockers.
- * Teak finger rings and finger latches on all drawers and locker doors.
- * Lined hanging lockers.
- * Zippered designer styled fabric on foam cushions and mattresses.
- * 1/2" teak and holly sole throughout (except head) with framed bilge inspection traps with flush, hinged finger lifts.

Forecabin:

- * 6' 6" over/under single berths with stowage under.
- * Hanging locker under port berth.
- * Holding tank under stbd. berth.

Head:

- * Versatile full width head compartment.
- * Marine grade textured vinyl on bulkheads.
- * Full height bureau with 3 drawers and bin under, large hanging locker on stbd. side.
- * Vanity with formica top and stowage under on port side.

- * Teak framed lucite mirror on bulkhead.
- * Door to forecabin closes off head area for privacy, leaving passageway to forecabin open.
- * Door to maincabin closes off hanging locker when open.

Salon:

- * Teak companionway ladder with teak handrails.
- * Teak facing on coachroof sides.
- * Full length teak handrails at sidedecks.
- * Teak bulkhead dropleaf dining table with bottle and magazine racks on bulkhead covered if table is up.
- * "L" shaped settee on port side. Stowage and water tank under: converts to double berth.
- * Settee on stbd. side with storage under: converts to single berth.
- * Stowage area behind settee backs with locker/bookshelf units over.

Galley:

- * "U" shaped with white mica top.
- * 4 drawers under aft counter.
- * Overhead locker on aft bulkhead.
- * Pot/pan locker under stove.
- * Dish lockers with sliding lucite doors outboard.
- * Removable trash bin under sinks.
- * Grab handles on bulkhead corners.

Navigation Station/Quarter Berth:

- * Teak chart table with hinged top, stowage under.
- * Electronics and stowage lockers, electrical panel, outboard of chart table.
- * Double quarter berth with stowage under. Head of berth serves as seat for chart table.

Engine Compartment:

- * Access panels stbd. side and behind companionway stairs.
- * Fully sound insulated.

Spars and Rigging

- * 7/8 fractional rig sloop.
- * Black, keel stepped aluminum mast with integral mainsail track, S.S. headstay, exit blocks for mainsail, genoa (2) and spinnaker halyards and topping lift.
- * PVC mast boot over cast alloy mast collar on coachroof.
- * Swept back, tapered air foil spreaders.
- * Sliding car on mast for spinnaker/whisker poles.

- * Black aluminum boom with internal cuthaul and reefing lines (2) with lever cam cleats for reefing at gooseneck.
- * S.S. tack reefing hooks (2) on gooseneck fitting.
- * S.S. stemhead fitting with tack hook thru-bolted to stem.
- * S.S. shroud chainplates, mounted inboard for close sheeting, thru bolted to main bulkheads.
- * S.S. backstay chainplates thru-bolted to reinforced transom.
- * S.S. forestay, upper and lower shrouds.
- * Split backstay with openbody turnbuckles.
- * Braided dacron running rigging.
- * Internal, prestretched main and genoa halyards led to aft coachroof through turning blocks and keyhole stoppers.
- * Outhaul led to aft coach roof through turning blocks and keyhole stoppers.
- * Mainsheet system with swivel block led aft to coach roof through turning blocks and keyhole stoppers.
- * Mainsheet traveller with 2 part crosshaul lines and cam cleats mounted on custom S.S. "horses" on coachroof.
- * Black anodized aluminum genoa tracks with movable cars and turning blocks.
- * Halyard winches (2) mounted on coachroof P&S.
- * Genoa sheet winches (2) mounted on cockpit coamings P&S.
- * Jam cleats mounted near winches for all halyards and sheets.
- * Lock-in with handles (2).

Steering

- * Pedestal steering with steering brake on pedestal.
- * 30" "destroyer" wheel with leather kid.
- * S.S. pedestal guard.
- * Emergency tiller.

Engine

- * 2 cylinder diesel engine, fresh water cooled, bolted to extra heavy engine bearers.
- * Oil dip pan under engine.
- * S.S. propeller shaft, stuffing box, bronze strut and 2 blade bronze propeller.
- * Seawater strainer on intake.
- * Waterlift exhaust system with waterlock muffler and gooseneck.
- * Aluminum fuel tank with deck fill, baffled and vented.
- * Primary fuel filter/water separator.

- * Throttle and shift controls mounted on steering pedestal.
- * Engine control panel with keyed ignition switch, cold start device, tachometer, audio/visual monitor system and fuel gauge, blower switch, mounted in cockpit.

Electrical

- * 12 VDC distribution panel with ammeter, volt-meter, battery test switch & 16 magnetic breakers.
- * 105 A.H. deep cycle marine batteries (2) in acid proof, vented boxes located in engine compartment.
- * Colour coded 12 VDC wiring, spiral wound.
- * Brass swivel reading lights (5) over settees and berths.
- * Brass overhead dome lights (2) in salon.
- * Twintube fluorescent lights in head (2) and galley (1).
- * Combination blue/white chart table light at navigation station.
- * Switched hooded courtesy lights (2) at floor level in salon and in head hanging locker.
- * Engine compartment light.
- * Internal running lights mounted on pullpit and pushpit.
- * Combination steaming/foredeck light on mast.
- * Masthead anchor light.
- * Bilge blower in engine compartment.
- * Lightning ground protection for mast.
- * Bonding of electrical chassis, large metal objects and fittings.
- * Zinc anode prop shaft.

Plumbing

- * Thru-hulls, seacocks, valves and fittings or marine grade, glass fibre reinforced nylon material.
- * Seacocks on all thru-hulls.
- * Screens on all intake thru-hulls.
- * Reinforced PVC water and waste lines: S.S. hose clamps (double clamped below waterline).
- * Poly water tank with deck fill and vent.
- * 12 VDC "demand" water pump with in-line strainer and accumulator tank.
- * Double S.S. deep sinks in galley.
- * Round S.S. sink in head.
- * Single lever mixer faucets at sinks.
- * Moulded waste tank with deck pumpout fitting and vent.
- * Hand operated ceramic marine head.
- * Manual bilge pump, mounted in cockpit, with in-line checkvalve and strumbox in bilge.
- * 12 VDC submersible bilge pump with automatic float switch and in-line checkvalve.

Cooking/Heating

- * Gimballed, S.S. 2-burner LPG stove with searails and potholders.
- * 10 lb. LPG tank with regulator and gauge.
- * 12 VDC solenoid shut-off valve at tank with switch in galley.

Refrigeration

- * 3 cu. ft. iceboxes (2) in galley, with lexar shelves. Heavily insulated all sides. Drained to handpump at sink.

Instruments/Electronics

- * 4-1/2 illuminated pinnacle compass mounted on steering pedestal.
- * VHF coax cable from mast base to navigation station.

The policy of Ticon Yachts Limited is one of continuous improvement. Therefore, equipment, colours, materials and other specifications, model availability and prices, are subject to change without notice or obligation.

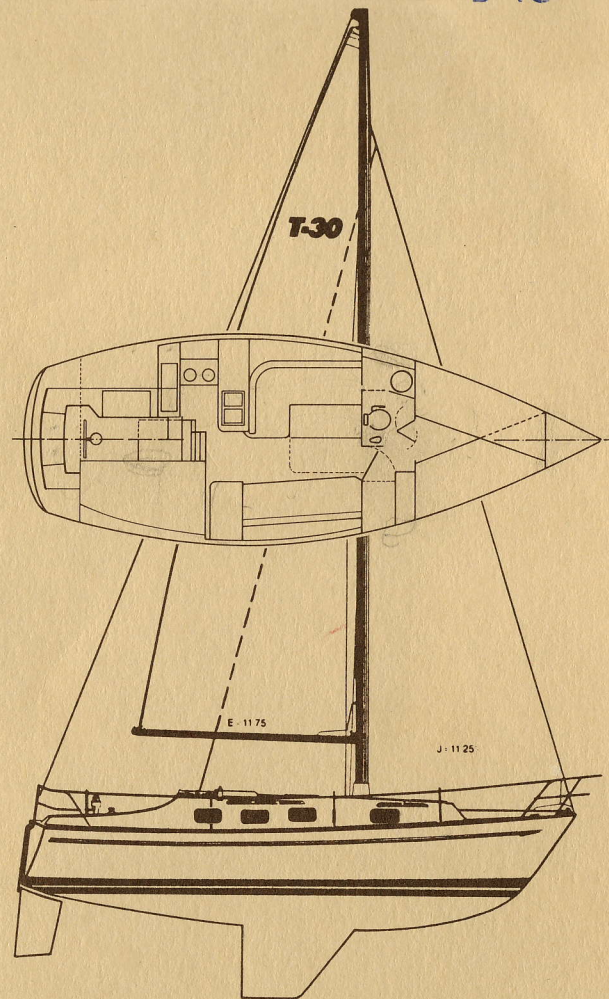
TICON 30



Built by

Ticon Yachts Limited
2265 Royal Windsor Drive
Mississauga, Ontario L5J 1K5

(416) 823-7222 Ticon 12/85



T-30 Specifications

LOA	29' 11"
LWL	26' 0"
Beam	11' 0"
Draft (Fixed Keel Version)	5' 5"
(Shoal Keel Version)	4' 1"
Ballast	4,250 lbs.
Displacement	9,600 lbs.
Berths	7
Rated Sail Area	434 sq. ft.
Consulting designer:	Halsey C. Herreshoff